



The economic tooling solution for general purpose machining applications

COMING SOON!



- ✓ Added coolant features come standard
- ✓ AT3 or better taper accuracy
- ✓ CAT tapers to ANSI B5.50

STM Premium Collet Chucks

CAT40 Balanced to G2.5 / 20,000 rpm
CAT50 Balanced to G2.5 / 15,000 rpm

STM Premium End Mill Holders

CAT40 Balanced to G2.5 / 8,000 rpm
CAT50 Balanced to G2.5 / 6,000 rpm

ER 11 Rubber Sealed Collets

- Sealed for coolant through applications
- Pressure resistance tested to 500 psi
- Size range: 3/16" - 17/64" 4.0 - 7.0 mm



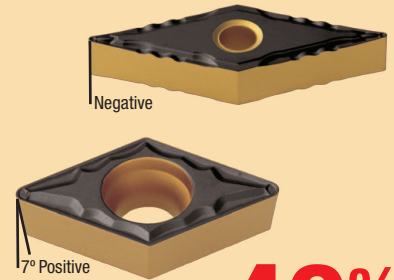
While Supplies Last

CLEARANCE:
All Rubber Sealed ER 11 Collets



Inch				Metric			
Size	Code No.	Reg. Price \$	SALE \$	Size	Code No.	Reg. Price \$	SALE \$
3/16	337622P	50.41	20.16	4.0	337634P	34.10	13.64
13/64	337624P	50.41	20.16	4.5	337636P	50.41	20.16
7/32	337626P	50.41	20.16	5.0	337638P	50.41	20.16
15/64	337628P	50.41	20.16	5.5	337640P	50.41	20.16
1/4	337630P	50.41	20.16	6.0	337642P	50.41	20.16
17/64	337632P	50.41	20.16	6.5	337644P	50.41	20.16
				7.0	337646P	50.41	20.16

Carbide Inserts CVD Coated Turning Grades PT15C/PT25C



See page 5

40% off!

CAT 40/50 Balanceable Shrink Fit Holders



See page 9

Starting At
\$222²¹

Yellow Ring HSSE-V3 Spiral Point & Spiral Flute Taps



See page 3

Starting At
\$7²⁸

Digital Calipers



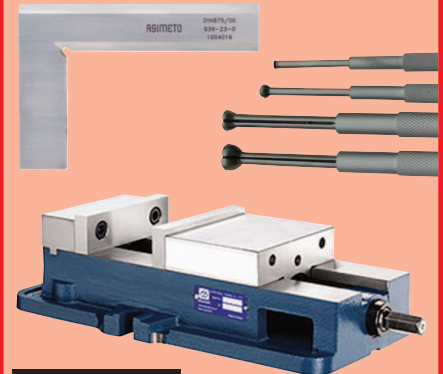
ASIMETO

See page 6

Starting At
\$46⁰¹

Warehouse Overstock

Wide Range Of Products Marked Down To Move



See pages 9-11

TABLE OF CONTENTS

- Cutting Tools** Pages 2-5
- Precision Tools** Pages 6-7
- Machine Tool Accessories** Pages 8, 12
- Warehouse Overstock**..... Pages 9-11

HSS Prentice Drills



- 1/2" shank
- 3" cutting length
- 6" overall length
- Flatted shank



Size	Decimal Equivalent	Code No.	Reg. Price \$	SALE \$
33/64"	0.5156"	107500	13.32	7.99
17/32"	0.5312"	107502	13.20	7.92
35/64"	0.5469"	107504	13.32	7.99
9/16"	0.5625"	107506	15.25	9.15
37/64"	0.5781"	107508	16.01	9.61
19/32"	0.5937"	107510	14.16	8.50
39/64"	0.6094"	107512	15.60	9.36
5/8"	0.6250"	107514	15.63	9.38
41/64"	0.6406"	107516	18.27	10.96
21/32"	0.6562"	107518	17.35	10.41
43/64"	0.6719"	107520	16.55	9.93
11/16"	0.6875"	107522	16.89	10.13
45/64"	0.7031"	107524	18.67	11.20
23/32"	0.7187"	107526	18.55	11.13
47/64"	0.7344"	107528	19.62	11.77
3/4"	0.7500"	107530	20.49	12.29
49/64"	0.7656"	107532	21.57	12.94
25/32"	0.7812"	107534	20.42	12.25
51/64"	0.7969"	107536	22.06	13.24
13/16"	0.8125"	107538	20.04	12.02
53/64"	0.8281"	107540	23.94	14.36
27/32"	0.8437"	107542	25.31	15.19
55/64"	0.8594"	107544	24.30	14.58
7/8"	0.8750"	107546	26.29	15.77
57/64"	0.8906"	107548	26.83	16.10
29/32"	0.9062"	107550	27.37	16.42
59/64"	0.9219"	107552	27.38	16.43
15/16"	0.9375"	107554	28.08	16.85
61/64"	0.9531"	107556	31.18	18.71
31/32"	0.9687"	107558	33.23	19.94
63/64"	0.9844"	107560	33.01	19.81
1"	1.0000"	107562	32.78	19.67
1-1/64"	1.0156"	107564	38.17	22.90
1-1/32"	1.0312"	107566	45.48	27.29
1-3/64"	1.0469"	107568	39.16	23.50
1-1/16"	1.0625"	107570	40.20	24.12

Taper Length Drills - Fractional Sizes

Taper length drills are designed for general purpose drilling where longer length is required.



Size (in.)	Decimal Equiv. (in.)	Flute Length	Overall Length	HSS Code No.	Reg. Price \$	SALE \$
1/64	0.0156	5/16	1-1/2	116792	11.99	7.19
1/32	0.0312	3/4	2	116793	9.48	5.69
3/64	0.0469	1-1/8	2-1/4	116794	4.54	2.72
1/16	0.0625	1-3/4	3	116795	4.70	2.82
5/64	0.0781	2	3-3/4	116796	5.49	3.29
3/32	0.0938	2-1/4	4-1/4	116797	6.65	3.99
7/64	0.1094	2-1/2	4-5/8	116798	8.20	4.92
1/8	0.1250	2-3/4	5-1/8	116799	8.47	5.08
9/64	0.1406	3	5-3/8	116800	11.21	6.73
5/32	0.1562	3	5-3/8	116801	10.17	6.10
11/64	0.1719	3-3/8	5-3/4	116802	11.99	7.19
3/16	0.1875	3-3/8	5-3/4	116803	10.17	6.10
13/64	0.2031	3-5/8	6	116804	13.73	8.24
7/32	0.2188	3-5/8	6	116805	14.53	8.72

Full size range on promotion. See page B26 of our Catalogue

Full size range on promotion. See page B26 of our Catalogue

2 Flute Long Length Carbide End Mills



Long Length End mills combine added flute and overall length for greater reach when deep slotting or milling. These end mills have the capability to mill much thicker material in a single pass, thereby eliminating the interrupted cut that may be present with regular length end mills.



Cutting Dia.	Shank Dia.	Flute Length	Overall Length	Bright Code No.	Reg. Price \$	SALE \$	TiAlN Code No.	Reg. Price \$	SALE \$
1/8	1/8	3/4	2-1/4	102961	24.97	14.98	102902	28.98	17.39
3/16	3/16	3/4	2-1/4	102962	27.55	16.53	102904	32.66	19.60
1/4	1/4	1-1/8	3	102963	31.90	19.14	102906	38.68	19.34
5/16	5/16	1-1/8	3	102964	39.39	19.70	102908	49.51	29.71
3/8	3/8	1-1/8	3	102965	44.30	22.15	102910	54.44	32.66
7/16	7/16	2	4	102966	66.96	40.18	102912	81.85	49.11
1/2	1/2	2	4	102967	71.22	42.73	102914	86.11	51.67
5/8	5/8	2-1/4	5	102968	146.78	102.75	102916	171.50	120.05
3/4	3/4	2-1/4	5	102969	233.82	163.67	102918	262.44	183.71
1	1	2-1/4	5	102970	397.52	278.26	-	-	-

4 Flute Long Length Carbide End Mills



Long Length End Mills combine added flute and overall length for greater reach when deep slotting or milling. These end Mills have the capability to mill thicker material in one pass, eliminating the interrupted cut that may be present with regular length end mills.



Cutting Dia.	Shank Dia.	Flute Length	Overall Length	Bright Code No.	Reg. Price \$	SALE \$	TiAlN Code No.	Reg. Price \$	SALE \$
1/8	1/8	3/4	2-1/4	102981	24.97	14.98	102922	28.98	17.39
3/16	3/16	3/4	2-1/4	102982	27.55	16.53	102924	32.66	19.60
1/4	1/4	1-1/8	3	102983	31.90	19.14	102926	38.68	19.34
5/16	5/16	1-1/8	3	102984	39.39	19.70	102928	49.51	29.71
3/8	3/8	1-1/8	3	102985	44.30	22.15	102930	54.44	32.66
7/16	7/16	2	4	102986	66.96	40.18	102932	81.85	49.11
1/2	1/2	2	4	102987	71.22	42.73	102934	86.11	51.67
5/8	5/8	2-1/4	5	102988	146.78	102.75	102936	171.50	120.05
3/4	3/4	2-1/4	5	102989	233.82	163.67	102938	262.44	183.71
1	1	2-1/4	5	102990	397.52	278.26	102940	434.64	304.25

CUTTING TOOLS

Yellow Ring HSSE-V3 Spiral Point Taps



HSSE-V3% Vanadium

- Superior performance in hardened tool steels such as 4140, 4340, H13, D2.
- Up to 35 HRC
- Designed for high-speed tapping applications. Developed to withstand the high stress and high heat associated with high-speed CNC production tapping. Features a unique free-cutting design with a special tempering and geometry which contributes to extra tool life.



- 4.5 Pitch lead (Intermediate)



Tap	Overall Length (in.)	Thread Length (in.)	Code No.	Reg. Price \$	SALE \$
2-56	1-3/4	0.433	122550	22.05	13.23
3-48	1-13/16	0.512	122552	17.64	10.58
4-40	1-7/8	0.433	123296	14.55	8.73
4-40	1-7/8	0.433	122554	14.55	8.73
6-32	2	0.512	123300	12.13	7.28
6-40	2	0.512	123334	12.13	7.28
8-32	2-1/8	0.512	123302	12.13	7.28
10-24	2-3/8	0.512	123304	12.13	7.28
12-24	2-3/8	0.512	123306	12.13	7.28
1/4-20	2-1/2	0.630	123308	13.34	8.00
1/4-28	2-1/2	0.630	123342	13.34	8.00
5/16-18	2-23/32	0.748	123310	15.00	9.00
5/16-24	2-23/32	0.748	123344	15.00	9.00
3/8-16	2-15/16	0.748	123312	16.97	10.18
3/8-24	2-15/16	0.748	123346	16.97	10.18
7/16-14	3-5/32	0.866	123314	22.05	13.23
7/16-20	3-5/32	0.866	123348	22.05	13.23
1/2-13	3-3/8	0.945	123316	25.47	15.28
1/2-20	3-3/8	0.945	123350	25.47	15.28
5/8-11	3-13/16	1.102	123318	46.30	27.78
5/8-18	3-13/16	1.102	123352	46.30	27.78
3/4-10	4-1/4	1.220	123320	72.54	43.52
3/4-16	4-1/4	1.220	123353	72.54	43.52
7/8-9	4-11/16	1.339	123321	103.84	62.30
7/8-14	4-11/16	1.339	123359	113.43	68.06
1-8	5-1/8	1.496	123323	138.35	83.01
1-12	5-1/8	1.496	123361	151.03	90.62
1-14	5-1/8	1.496	123360	151.03	90.62
1-1/8-7	5-7/16	1.732	123364	232.82	139.69
1-1/8-12	5-7/16	1.732	123365	247.71	148.63
1-1/4-7	5-3/4	1.732	123367	305.48	183.29
1-1/4-12	5-3/4	1.732	123369	309.66	185.80
1-3/8-6	6-1/16	2.000	123371	384.85	230.91
1-3/8-12	6-1/16	2.000	123373	387.71	232.63
1-1/2-6	6-3/8	2.000	123363	442.50	309.75
1-1/2-12	6-3/8	2.000	123375	452.20	316.54

Yellow Ring HSSE-V3 Spiral Flute Taps



HSSE-V3% Vanadium

- Superior performance in hardened tool steels such as 4140, 4340, H13, D2.
- Up to 35 HRC
- Designed for high-speed tapping applications. Developed to withstand the high stress and high heat associated with high-speed CNC production tapping. Features a unique free-cutting design with a special tempering and geometry which contributes to extra tool life.



- 2.5 Pitch lead (Bottoming)



Tap	Overall Length (in.)	Thread Length (in.)	Code No.	Reg. Price \$	SALE \$
2-56	1-3/4	0.433	122500	33.07	19.84
3-48	1-13/16	0.512	122502	26.57	15.94
4-40	1-7/8	0.250	123362	21.83	13.10
4-40	1-7/8	0.250	122506	21.83	13.10
6-32	2	0.313	123366	17.75	10.65
8-32	2-1/8	0.313	123368	17.75	10.65
10-24	2-3/8	0.417	123370	17.75	10.65
10-32	2-3/8	0.417	123382	17.75	10.65
1/4-20	2-1/2	0.500	123372	19.18	11.51
1/4-28	2-1/2	0.500	123384	19.18	11.51
5/16-18	2-23/32	0.556	123374	23.59	14.15
5/16-24	2-23/32	0.556	123386	23.59	14.15
3/8-16	2-15/16	0.625	123376	27.45	16.47
3/8-24	2-15/16	0.625	123388	27.45	16.47
7/16-14	3-5/32	0.714	123378	41.01	24.61
7/16-20	3-5/32	0.714	123389	41.01	24.61
1/2-13	3-3/8	0.769	123380	48.29	28.97
1/2-20	3-3/8	0.769	123392	48.29	28.97
5/8-11	3-13/16	0.909	123452	85.10	51.06
5/8-18	3-13/16	0.909	123462	85.10	51.06
3/4-10	4-1/4	1.000	123454	109.47	65.68
3/4-16	4-1/4	1.000	123464	109.47	65.68
7/8-9	4-11/16	1.111	123466	152.25	91.35
7/8-14	4-11/16	1.111	123468	159.41	95.65
1-8	5-1/8	1.250	123469	203.17	121.90
1-12	5-1/8	1.250	123470	213.31	127.99
1-14	5-1/8	1.250	123465	211.44	126.86
1-1/8-7	5-7/16	1.429	123471	295.99	177.59
1-1/8-12	5-7/16	1.429	123472	314.95	188.97
1-1/4-7	5-3/4	1.429	123473	389.37	233.62
1-1/4-12	5-3/4	1.429	123474	394.33	236.60
1-3/8-6	6-1/16	1.667	123475	461.91	323.34
1-3/8-12	6-1/16	1.667	123476	464.88	325.42
1-1/2-6	6-3/8	1.667	123477	531.24	371.87
1-1/2-12	6-3/8	1.667	123478	542.82	379.97

HSSE-V3 ANSI SHANK Yellow Ring

- For tough materials including:
- :: HIGH CARBON STEEL
 - :: HIGH ALLOY
 - :: TITANIUM
 - :: ALUMINUM



Cutting Speed (fpm)

	10	20	30	40	50	60	70	80	90	100
Tool Steels										
Medium Carbon										
Alloyed High Carbon										
High Strength										
Titanium										
Aluminum										

Hardness (hrc)

	0	5	10	15	20	25	30	35	40
Tool Steels									
Medium Carbon									
Alloyed High Carbon									
High Strength									
Titanium									
Aluminum									

Adjustable Tap Wrenches



Tool No.	For Tap Size	Square	Length (mm)	Code No.	Reg. Price \$	SALE \$
130/0	M1-8 1/16-1/4	2.0-5.5	130	113717	23.36	14.02
130/1.5	M1-10 1/16-3/8 NPT-1/8	2.0-6.3	176	113794	25.29	15.17
130/2	M4-12 5/32-1/2 NPT-1/8	3.0-9.0	280	113725	36.70	22.02
130/3	M5-20 7/32-3/4 NPT-1/8-1/2	4.9-12	380	113730	56.62	33.97
130/4	M11-27 7/16-1 NPT-1/4-3/4	5.5-16	500	113735	92.25	55.35
130/5L	M13-32 1/2-1-1/4 NPT-1/4-1	7-20	700	113740	147.68	88.61

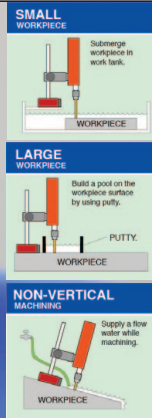
Die Stocks



Tool No.	(mm)	(in)	Length (mm)	Code No.	Reg. Price \$	SALE \$
13/16	20.6 x 6.35	13/16 x 1/4	200	113750	17.12	10.27
1	25.4 x 9.5	1 x 3/8	224	113755	17.87	10.72
1 1/2	38.1 x 121.7	1-1/2 x 1/2	315	113760	29.39	17.63
2	50.8 x 15.9	2 x 5/8	560	113765	65.23	39.14



The quick solution to a broken tap. Fast, low cost, and high performance!



TR100 EDM Broken Tap Remover

- Light, small, portable, compact design
- High speed & high efficiency
- Simple operation allows easy removal of broken tap
- Dielectric: Uses ordinary tap water as the dielectric medium
- Electrode: Using any brass bar as electrode
- CSA Approved
- Flexibility: Machining easily even on a large workpiece
- No damage: Remove taps without damaging the threads
- Complete functions: Auto feed, depth setting, selectable arc timer, auto retract, workhead swivel alarm messages: depth arrival, arcing, over-temp.
- More applications: Starting holes for Wire Cut EDM, cutting Tungsten Carbide or any hardened steel



Code No.: 901176
Reg. Price: \$7,199.46



LIMITED QUANTITIES

Call for pricing

Adjustable Tap Wrenches "T" Ratchet Type



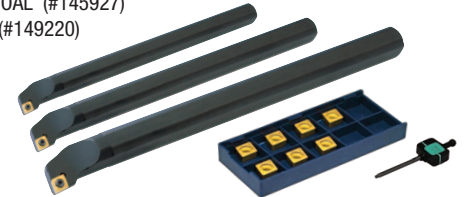
Tool No.	For Tap Size	Length (mm)	Code No.	Reg. Price \$	SALE \$
100/1	M3-10 1/8 - 3/8	85	113700	52.96	31.78
100/2	M5-12 7/32 - 1/2	100	113705	65.23	39.14
100/10	M3-10 1/8-3/8	250	113710	84.93	50.96
100/20	M5-12 7/32 - 1/2	300	113715	98.28	58.97

SI-SCLCR Master Boring Bar Kit



Consists of:

- 1 - 5/8" ø B/Bar, SI-SCLCR 10-3, 8" OAL (#145925)
- 1 - 3/4" ø B/Bar, SI-SCLCR 12-3, 10" OAL (#145926)
- 1 - 1" ø B/Bar, SI-SCLCR 16-3, 12" OAL (#145927)
- 10 - CCMT32.51-F2P PT25C inserts (#149220)
- 1 - wrench (#146940)



Application	Material	Code No.	Reg. Price \$	SALE \$
Medium	Steel	149844	531.85	345.70

PRO Part-Off Kits



Consists of:

- 1 - PP-B Part-Off Blade
- 10 - SP 300/400 Inserts (Coated)
- 1 - SW15S Wrench



Kit Contents	Insert	Code No.	Reg. Price \$	SALE \$
PP-B326S 1" Blade (146232)	SP300 PT30C	149835	387.99	252.19
PP-B332S 1-1/4" Blade (146898)	SP300 PT30C	149836	387.99	252.19
PP-B432S 1-1/4" Blade (146454)	SP400 PT30C	147441	394.19	256.22

MCLNR Turning Kits



Consists of:

- 1 - MCLNR Toolholder
- 10 - CNMG/A 432 Inserts (Coated)



Application	Contents	Code No.	Reg. Price \$	SALE \$
Finishing (Steel)	1 - MCLNR16-4D (145828)	149348	352.06	228.84
	10 - CNMG432-F2 PT15C (149390)			
Med/Finish (Steel)	1 - MCLNR16-4D (145828)	149374	355.16	230.85
	10 - CNMG432-MM PT25C (149256)			
Medium (Cast Iron)	1 - MCLNR16-4D (145828)	148804	465.17	302.36
	10 - CNMA432 KT10C (147473)			

INDEXABLE CUTTING TOOLS

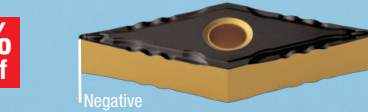
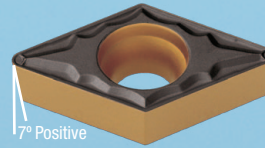


NEW! CARBIDE INSERTS

Positive & Negative
CVD Coated Turning Grades

PT15C / PT25C

All inserts in our Carbide Inserts brochure (pages 2-8) are on sale. Scan the QR code with the camera on your phone for more information and to see all inserts. *Does not include Kits.



40% off

CNMG-M/M1

Starting at **\$9.22**

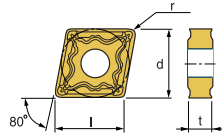


- USE Medium
- Recommendation

- Wide available chip control range from medium-finishing to medium-roughing.
- Suitable chip breaker for CNC machining

M $d = 0.04\text{--}0.2\text{inch}$
 $f = 0.004\text{--}0.02\text{ipr}$

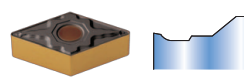
M1 $d = 0.035\text{--}0.2\text{inch}$
 $f = 0.002\text{--}0.012\text{ipr}$



Designation	ISO	PT15C	PT25C	l	d	t	r	Holders
CNMG 431-M	120404		149394	0.508	1/2	3/16	1/64	Turning DCLNR/L MCKNR/L MCLNR/L MCRNR/L Boring MCLNR/L PCLNR/L
CNMG 431-M1	120404		149251	0.508	1/2	3/16	1/64	
CNMG 432-M1	120408	149393	149377	0.508	1/2	3/16	1/32	
CNMG 432-M	120408		149231	0.508	1/2	3/16	1/32	
CNMG 433-M1	120412	149555		0.508	1/2	3/16	3/64	

DNMG-M/M1

Starting at **\$11.30**

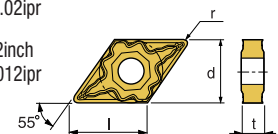


- USE Medium
- Recommendation

- Wide available chip control range from medium-finishing to medium-roughing.
- Suitable chip breaker for CNC machining

M $d = 0.04\text{--}0.2\text{inch}$
 $f = 0.004\text{--}0.02\text{ipr}$

M1 $d = 0.035\text{--}0.2\text{inch}$
 $f = 0.002\text{--}0.012\text{ipr}$



Designation	ISO	PT15C	PT25C	l	d	t	r	Holders
DNMG 431-M	150404		149261	0.610	1/2	3/16	1/64	Turning DDJNR/L MDJNR/L Boring PDSNR/L PDUNR/L
DNMG 432-M	150408	149334	149233	0.610	1/2	3/16	1/32	
DNMG 441-M	150604	149441	149445	0.610	1/2	1/4	1/64	
DNMG 431-M1	150404	149439		0.610	1/2	3/16	1/64	
DNMG 432-M1	150408		149243	0.610	1/2	3/16	1/32	

TNMG-M/M1

Starting at **\$8.06**

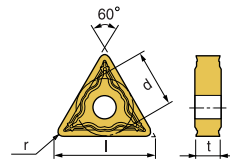


- USE Medium
- Recommendation

- Wide available chip control range from medium-finishing to medium-roughing.
- Suitable chip breaker for CNC machining

M $d = 0.04\text{--}0.2\text{inch}$
 $f = 0.004\text{--}0.02\text{ipr}$

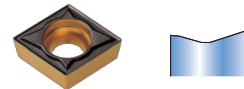
M1 $d = 0.035\text{--}0.2\text{inch}$
 $f = 0.002\text{--}0.012\text{ipr}$



Designation	ISO	PT15C	PT25C	l	d	t	r	Holders
TNMG 331-M1	160404		149259	0.650	3/8	3/16	1/64	Turning DTJNR/L MTCNN MTFNR/L MTENN MTGNR/L MTJNR/L Boring MTFNR MTUNR PTFNR/L
TNMG 431-M	220404		149240	0.886	1/2	3/16	1/64	
TNMG 432-M	220408	149449	149228	0.886	1/2	3/16	1/32	
TNMG 432-M1	220408		149278	0.886	1/2	3/16	1/32	
TNMG 433-M1	220412		149288	0.886	1/2	3/16	3/64	

CCMT-F3P

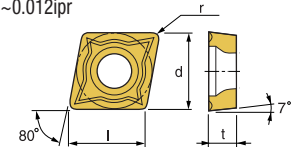
Starting at **\$7.59**



- USE Medium
- Recommendation

- Suitable for intermittent cutting and cast iron machining.
- Good surface finish due to low cutting force.
- Suitable for both boring and outer diameter turning.

F3P $d = 0.04\text{--}0.12\text{inch}$
 $f = 0.004\text{--}0.012\text{ipr}$



Designation	ISO	PT15C	PT25C	l	d	t	r	Holders
CCMT 21.51-F3P	060204		149241	0.256	1/4	3/32	1/64	Turning SCACR/L Boring SCLCR/L
CCMT 32.51-F3P	09T304		149230	0.382	3/8	5/32	1/64	
CCMT 32.52-F3P	09T308		149242	0.382	3/8	5/32	1/32	
CCMT 431-F3P	120404		149262	0.508	1/2	3/16	1/64	
CCMT 432-F3P	120408		149287	0.508	1/2	3/16	1/32	

Dial Bore Gauges

- Graduation: 0.0001"
- Fixed measuring points made of steel
- Movable probe pin with carbide ball



ASIMETO

Range	No. Anvils	No. Spacers	No. Sub-Anvils	Probe Depth	Code No.	Reg. Price \$	SALE \$
Inch							
0.7"-1.5"	10 pcs	2	-	6"	7483211	259.75	181.83
2.0"-6.0"	11 pcs	4	1	6"	7483311	247.61	173.33

Digital Calipers

- Resolution 0.0005" / 0.01mm
- Extra large LCD readout
- The origin position is retained through the on/off cycle
- Inch/Metric conversion



ASIMETO

Range	Accuracy	Code No.	Reg. Price \$	SALE \$
0-6"/0-150mm	±0.001"/±0.02mm	7307065	76.69	46.01
0-8"/0-200mm	±0.0015"/±0.03mm	7307085	113.45	68.07
0-12"/0-300mm	±0.0015"/±0.03mm	7307125	169.99	118.99

Impact Hardness Tester

- Used for determining the hardness of ferrous and non-ferrous metals
- Hardness is displayed in an "L" value that can be converted into Brinell, Rockwell, Vickers, and Shore Hardness.

Specifications:

- Range: 330-890HL
- Testing direction: Arbitrary
- Mass of impact body: 5.5g
- Impact capacity: 11 Nmm
- Power: DC 6.0V
- Diameter of carbide ball: 3mm



ASIMETO

Description	Code No.	Reg. Price \$	SALE \$
Impact Hardness Tester	7640171	1,995.31	1,396.72

Digital Protractors - Level Type

- This protractor provides an immediate digital reading of any angle in a full circle with 0°-90°-0°-90°-0° readings.
- ABS/ZERO button allows two measuring modes, Standard and Alternate Reference
- Four 90° quadrants for display purposes
- HOLD button for freezing a reading in an unreadable position
- V-grooves on top and bottom for use on curved surfaces
- 7490162 has a magnet in the base, helpful in fixing



ASIMETO

Range	Resolution	Accuracy	Code No.	Reg. Price \$	SALE \$
360°	0.1°	±0.1°	7490160	231.68	162.18
360°	0.1°	±0.1°	7490162*	195.85	137.10

*magnetic base

Centering Indicator

- Provides a simplified method of centering a work piece or fixture on horizontal for vertical machines, internal or external diameters. Face of indicator remains stationary in any desired position while the machine spindle rotates, leaving the operator with both hands free to accurately position the machine table
- Shank Dia.: 3/8" / 10mm
- Operating speed not to exceed 800rpm
- Range:
Internal: 5/32" - 12" / 4 - 300mm
External: Up to 12" / 300mm
- Comes with calibration certificate

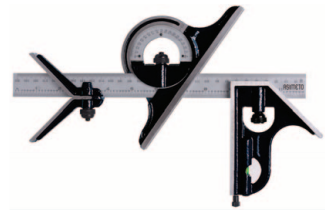


ASIMETO

Dial Range	Graduation	Accuracy	Stem Dia.	Code No.	Reg. Price \$	SALE \$
0-0.15"	0.0005"	±0.0002"	0.375"	7469008	276.12	193.28

Combination Square Sets

- Graduations:
Protractor: 1°
Blades: 1mm, 64ths, 32nds, 0.5mm (E/M) 8ths, 16ths, 32nds, 64ths (4R)
- Blades are hardened and tempered for durability
- Micro-fine blade graduations
- Gage heads are hardened cast finished in baked enamel with exception of the measurement faces



ASIMETO

Description	Blade Length	Code No.	Reg. Price \$	SALE \$
4 pc Set (E/M ruler)	12"/300mm	7490208	195.35	136.75
4 pc Set (4R ruler)	12"	7490218	195.35	136.75

Inside Micrometers - Interchangeable Rod Type

- Graduation: Inch: 0.001"
- Rods marked with its measuring range
- Satin chrome finish throughout
- All contact points hardened for extra long tool life



ASIMETO

Range	Head Travel	Grad.	Spacing Collar	Rod Dia.	Notes	Code No.	Reg. Price \$	SALE \$
2-12"	0.50"	0.001"	0.500"	0.248"	2" Mic head & 10 Rods	7242121	341.35	238.95

Micrometer Stand

- This stand is designed to allow bench top use with hand micrometers
- Painted cast iron



ASIMETO

Code No.: 7109021
Reg. Price: \$50.98

\$30.59

PRECISION TOOLS

Bore Gauges (Taper Gauges)

Manufactured from stainless steel, these have permanently engraved graduations. Accurate taper throughout the length of the gage. Available with imperial or metric graduations.



Range	Model No.	Code No.	Reg. Price \$	SALE \$
1/32"-5/8"	DG/1-15	231276	28.30	16.98
1-16mm	BG/1-15	231277	28.32	16.99

Surface Plate Cleaner

- An exclusive formulation that is extremely effective for the cleaning and care of granite surface plates.
- Works quickly and effectively, leaves no residue on the granite.



ASIMETO

Description	Code No.	Reg. Price \$	SALE \$
Pint Spray Bottle	7607520	12.48	7.49
Gallon	7607550	43.43	21.72

Black Granite Surface Plates 0-Ledge

Imported Precision Toolroom Black Granite Surface Plates. These plates are made of the highest quality – True Black – Fine Grained – Non-porous – Jewel Hardness – Granite available to give years of long lasting service.



Specifications:

Compressive Strength 7329 lbs. / in²
Water Absorptivity 0.13%

Size (in.)	Thickness (in.)	Shipping Weight (lb)	(±)	Code No.	Reg. Price \$	SALE \$
Grade B-Tool Room- No Ledge						
9 x 12	3	40	0.0001	255100	102.59	66.68
12 x 18	3	110	0.0001	255105	159.45	103.64
18 x 24	4	189	0.00015	255110	423.28	275.13
24 x 36	4	475	0.0002	255115	777.26	505.22
36 x 48	6	1427	0.0004	255120	2,108.34	1,370.42
48 x 72	8	3300	0.0007	255125	6,144.17	3,993.71
Grade A-Inspection						
12 x 18	3	110	0.000050	255130	244.19	158.72
18 x 24	3	145	0.000075	255135	394.67	256.54
24 x 36	4	475	0.0001	255140	856.98	557.04

Universal Magnetic Indicator Holder

- Two universal ball sockets permit adjustment to any angle or position
- Fine adjustment
- Dovetail clamp for test indicators
- 1/4" hole for 1/4" stem indicators



Code No.: 200825
Reg. Price: \$20.80

\$12.48

Scribers

- MS/4** Single ended light duty
- MS/MG/6** Tungsten carbide tip for marking on hard materials. Permanent magnet on the other end for picking up small metal parts
- MS/P/3** Scriber point is held by a knurled chuck and can be reversed when not in use
- MS/ST/9** Single ended heavy duty
- MS/7** Double ended with one straight point and one point bent at 90°
- MS/H/8** Double ended heavy duty with one straight point, the other bent at 90°



Overall Length	Model No.	Code No.	Reg. Price \$	SALE \$
4-1/2	MS/4	231252	3.24	1.94
6	MS/MG/6	231254	13.72	8.23
3-1/2	MS/P/3	231256	7.62	4.57
7	MS/ST/9	231258	5.12	3.07
7-1/2	MS/7	231262	5.12	3.07
9-3/16	MS/H/8	231264	6.00	3.60

Surface Roughness Standards Set

- Used for the visual comparison of surface roughness
- Set of 30 specimens, 7/8" x 3/8" electro-formed, solid nickel

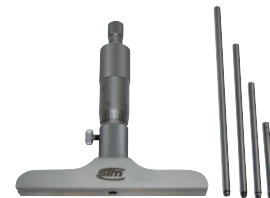
ASIMETO



Code No.	Reg. Price \$	SALE \$
7506010	323.39	226.37

Depth Micrometers

- Base surface hardened and ground
- Satin chrome finish
- 0.001" graduations
- Complete with fitted case



Range	Graduation	Base	Code No.	Reg. Price \$	SALE \$
0-4"	0.001"	2-1/2"	200550	178.32	115.91
0-4"	0.001"	4"	200552	265.42	172.52
0-6"	0.001"	2-1/2"	200557	179.30	116.55
0-6"	0.001"	4"	200555	219.26	142.52

Feeler Gauge

- 26 tapered leaf thickness gauges
- 3" long



Range (in.)	Code No.	Reg. Price \$	SALE \$
0.0015" to 0.025"	606050	41.58	24.95

Order before 3:00pm EST and we'll ship same day

Precision Boring Heads

- Ideal for mill or jig bore operation
- These heads readily adapt to many different machines due to interchangeable shanks
- Maximum rigidity is assured even when boring bar holder is used in an offset position
- Hardened and ground adjustment screw, along with outside base design, guarantees long life and trouble free use



Head Dia.	Hole Size	Offset	Code No.	Reg. Price \$	SALE \$
2"	1/2"	1/2"	356001	165.55	107.61
3"	3/4"	3/4"	356002	238.64	155.12
4"	1"	1"	356003	406.66	264.33

Shanks For Boring Heads

Size	Thread	Code No.	Reg. Price \$	SALE \$
R8	1-1/2" - 18	356010	110.75	71.99
ISA40	1-1/2" - 18	356012	135.38	88.00
3/4" S.S.	1-1/2" - 18	356018	86.22	51.73
MT4	1-1/2" - 18	356020	123.06	79.99
1" S.S.	1-1/2" - 18	356025	86.22	51.73



Drill Press Vise

- High tensile iron casting
- Cold rolled screw thread
- Plain jaws of special steel



Jaw Width	Jaw Opening	Jaw Depth	Code No.	Reg. Price \$	SALE \$
3"	3"	1-1/8"	370206	70.90	42.54

Driven Tooling



Driven tools for CNC turning centers allow milling, drilling, and tapping operations on the lathes without additional parts handling. Also in this case GS can supply a wide range of types in order to equip the CNC lathes and turrets of the most popular builders on the market with an unbeatable price/quality ratio.

- Main body designed to maximize rigidity and reduce vibration
- Specially treated corrosion resistant steel body
- Angular contact bearings + taper roller bearings on output spindle for better rigidity and longer life
- Gleason spiral bevel gears with completely ground involute form
- Rated up to 80Nm torque and 8,000 rpm
- Internal coolant option - up to 80bar
- 2 Year Warranty



RD
Radial



AX
Axial

Driven Tools For DOOSAN Lathes PUMA 230 - 240 - 280 M-MS

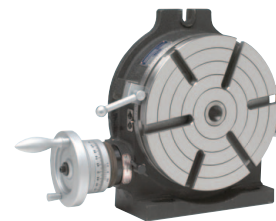
- Hexagonal tool shaft lock wrench
- Cooling nozzle
- Nozzle lock screws
- Driven tool locking screws
- O-ring

▼ Direction of rotation is same as machine spindle ▼ Direction of rotation is opposite to machine spindle

Model	Orient	Rotation	Turret	Output	Internal Coolant	Nm	Rpm	Gauge Length	Code No.	Reg. Price \$	SALE \$
99.DS.A01	AX	▼	BMT55	ER 25	-	40	8,000	57.2 mm	381512	1,880.34	1,316.24
99.DS.A02	AX	▼	BMT55	ER 25	• 80bar	40	8,000	57.2 mm	381513	2,156.81	1,509.77
99.DS.A11	RD	▼	BMT55	ER 25	-	40	8,000	70 mm	381514	3,539.34	2,477.54
99.DS.A12	RD	▼	BMT55	ER 25	• 80bar	40	8,000	70 mm	381515	4,180.89	2,926.62

Horizontal/Vertical Rotary/Dividing Tables

- This HV type Rotary Table is so designed as to permit machining operations at a higher dimension than that of RT type rotary tables
- The base can be used in a vertical position to enable it to carry out center work



Model	Table OD	Base Dim.	T-Slot Width	Center Sleeve	Code No.	Reg. Price \$	SALE \$
HV-4	4.33"	5.71"x4.53"	0.43"	MT2	326498	1,084.35	704.83
HV-6	5.91"	7.87"x6.3"	0.43"	MT2	326500	1,084.35	704.83
HV-8	7.87"	10.43"x8.66"	0.55"	MT3	326505	1,678.03	1,090.72
HV-10	9.84"	12.8"x11.02"	0.55"	MT3	326510	2,085.55	1,355.61
HV-12	11.81"	15.27"x12.99"	0.63"	MT4	326515	2,596.91	1,687.99
HV-16	15.98"	19.69"x16.93"	0.63"	MT4	326525	4,903.07	3,187.00

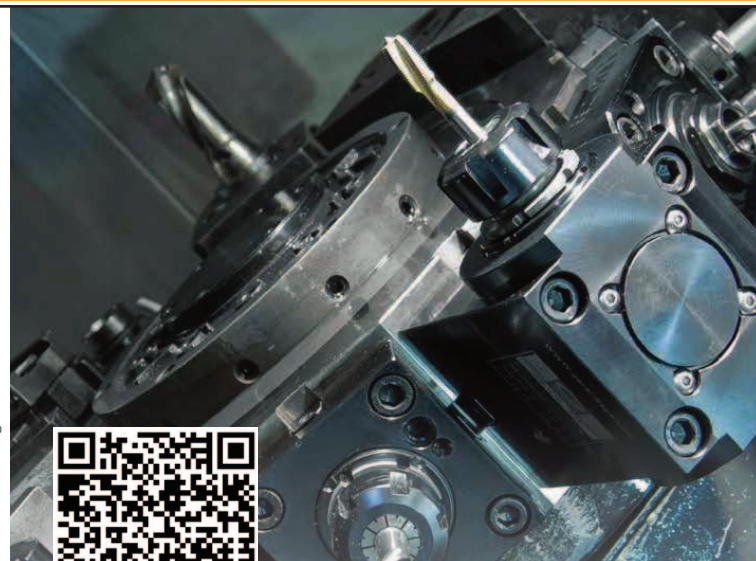
3-Jaw Cast Iron Scroll Chucks - 2pc Hard Rev. Jaws

These chucks are designed for all types of workshop machining operations on conventional lathes and milling fixtures.

- Smart design allowing inner parts to be replaced quickly
- Plain back



Chuck Size	Hole	Max. input torque (ft/lbs)	Max rpm	Weight (lbs.)	Code No.	Reg. Price \$	SALE \$
6"	1.575"	118.02	2,500	18.26	4440710	341.11	221.72
8"	2.559"	184.40	2,000	31.02	4440715	447.68	290.99
10"	3.150"	236.03	1,600	50.60	4440720	594.28	386.28
12"	3.937"	295.04	1,200	90.20	4440725	1,073.92	698.05
16"	5.433"	368.80	1,000	156.20	4440730	1,383.50	899.28



For the full line see flyer on www.SowaTool.com
DMG-Mori, Haas, and Mazak also available.

WAREHOUSE OVERSTOCK

All items only while quantities last.

CAT 40/50 Balanceable Shrink Fit Holders

- With threaded holes in order to balance with supplied balancing screws
- Coolant thru the spindle capability
- For maximum gripping power with exceptional concentricity
- Concentricity of ≤ 0.0001 " with tool shrunk in holder
- Tool is gripped 360° along the entire length of bore resulting in an evenly distributed clamping force
- Back up screws are available on request



CAT 40
Premium
Balanced
30k
RPM

CAT 40

Legth Taper	Hole Dia.	Gauge Length	Code No.	Reg. Price \$	SALE \$
Inch					
CAT40	3/16	3.15"	531840	341.86	222.21
CAT40	1/4	6.30"	531844	402.72	261.77
CAT40	5/16	3.15"	531846	341.86	222.21
CAT40	5/16	6.30"	531848	402.72	261.77
CAT40	1/2	6.30"	531856	402.72	261.77
CAT40	5/8	3.15"	531858	341.86	222.21
CAT40	3/4	3.15"	531862	341.86	222.21
CAT40	1-1/4	3.94"	531870	341.86	222.21
CAT40	1-1/4	6.30"	531872	510.20	331.63
Metric					
CAT40	10	80	531814	341.86	222.21
CAT40	20	80	531826	341.86	222.21



CAT 50
Premium
Balanced
25k
RPM

CAT 50

Legth Taper	Hole Dia.	Gauge Length	Code No.	Reg. Price \$	SALE \$
Inch					
CAT50	1/4	6.30"	531934	510.20	331.63
CAT50	5/16	3.15"	531936	380.16	247.10
CAT50	3/8	3.15"	531940	399.17	259.46
CAT50	5/8	3.15"	531948	399.17	259.46
CAT50	3/4	3.15"	531952	436.39	283.65
CAT50	1	6.30"	531958	545.16	354.35
CAT50	1-1/4	3.94"	531960	436.39	283.65
CAT50	1-1/4	6.30"	531962	646.17	420.01
Metric					
CAT50	8	80	531904	436.39	283.65
CAT50	16	80	531916	436.39	283.65
CAT50	25	100	531924	477.83	310.59

BT 30/40 Balanceable Shrink Fit Holders

- With threaded holes in order to balance with supplied balancing screws
- Coolant thru the spindle capability
- For maximum gripping power with exceptional concentricity
- Concentricity of ≤ 0.0001 " with tool shrunk in holder
- Tool is gripped 360° along the entire length of bore resulting in an evenly distributed clamping force
- Back up screws are available on request



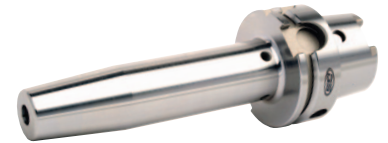
BT 30
Premium
Balanced
20k
RPM

BT 30

Legth Taper	Hole Dia.	Gauge Length	Code No.	Reg. Price \$	SALE \$
Inch					
BT30	1/4	3.15"	532418	334.09	217.16
BT30	1/2	3.15"	532424	334.09	217.16

HSK 63A/100A Balanceable Shrink Fit Holders

- With threaded holes in order to balance with supplied balancing screws
- Coolant thru the spindle capability
- Pre-Balanced up to 30,000 rpm
- For maximum gripping power with exceptional concentricity.
- Concentricity of ≤ 0.0001 " with tool shrunk in holder
- Tool is gripped 360° along the entire length of bore resulting in an evenly distributed clamping force
- Back up screws are available on request



HSK 63
Premium
Balanced
30k
RPM

HSK 63A

Legth Taper	Hole Dia.	Gauge Length	Code No.	Reg. Price \$	SALE \$
Inch					
HSK63A	5/16	3.15"	536346	415.67	270.19
HSK63A	3/8	6.30"	536352	538.69	350.15
HSK63A	5/8	3.74"	536358	415.67	270.19
HSK63A	5/8	6.30"	536360	538.69	350.15
HSK63A	3/4	3.94"	536362	415.67	270.19
HSK63A	3/4	6.30"	536364	538.69	350.15
HSK63A	1	4.53"	536366	415.67	270.19
HSK63A	1	6.30"	536368	538.69	350.15
HSK63A	1-1/4	4.72"	536370	415.67	270.19
HSK63A	1-1/4	6.30"	536372	538.69	350.15
Metric					
HSK63A	6	80	536306	415.67	270.19
HSK63A	10	85	536314	415.67	270.19



HSK 100
Premium
Balanced
25k
RPM

HSK 100A

Legth Taper	Hole Dia.	Gauge Length	Code No.	Reg. Price \$	SALE \$
Inch					
HSK100A	3/8	6.30"	536442	674.65	438.52
HSK100A	5/8	6.30"	536450	674.65	438.52
HSK100A	3/4	4.13"	536452	613.79	398.96
HSK100A	3/4	6.30"	536454	674.65	438.52
HSK100A	1	6.30"	536458	674.65	438.52
HSK100A	1-1/4	6.30"	536462	674.65	438.52

BT 30/40 Balanceable Shrink Fit Holders

- With threaded holes in order to balance with supplied balancing screws
- Coolant thru the spindle capability
- For maximum gripping power with exceptional concentricity
- Concentricity of ≤ 0.0001 " with tool shrunk in holder
- Tool is gripped 360° along the entire length of bore resulting in an evenly distributed clamping force
- Back up screws are available on request



BT 40
Premium
Balanced
30k
RPM

BT 40

Legth Taper	Hole Dia.	Gauge Length	Code No.	Reg. Price \$	SALE \$
Inch					
BT40	1/4	6.30"	532470	430.92	280.10
BT40	3/8	3.54"	532476	341.86	222.21
BT40	3/8	6.30"	532478	436.39	283.65
BT40	1/2	3.54"	532480	341.86	222.21
BT40	1/2	6.30"	532482	402.72	261.77
BT40	5/8	3.54"	532484	402.72	261.77
BT40	3/4	6.30"	532490	402.72	261.77
BT40	1-1/4	3.94"	532496	402.72	261.77
Metric					
BT40	6	90	532432	402.72	261.77
BT40	8	90	532436	341.86	222.21

Order before 3:00pm EST and we'll ship same day

"G" Clamp

- SG iron with a tensile strength over 60,000 psi
- Powder coated finish
- Swiveling pad
- Handle designed to bend before the frame can be overstressed
- Model: GCL/13D/100
- Clamp Capacity: 4"
- Throat Depth: 2-11/32"
- Load Capacity: 1200 lb



Code No.: 231442 **\$15.38**
Reg. Price: \$38.45

Lock-Well Precision Milling Vise

- 8" x 10" opening
- Bed height: 3.310"
- 4 Jaw Plate positions allowing extra capacity with the jaw plates in the outside position
- The other quality movable jaw does not lift off the bed, and deflection of the stationary bed is minimized
- The lead screw is enclosed for maximum protection

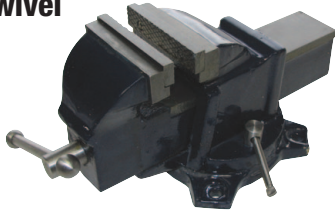


Code No.: 327130
Reg. Price: \$1,753.55

\$1,052.13

Bench Vise With Swivel

- Steel serrated jaws
- Heavy duty cast iron body



Jaw Size	Code No.	Reg. Price \$	SALE \$
6"	326795	232.65	139.59

80pc SAE Grease Fitting Assortment

- Contents:
- 1/8"-27 PTF - 25pcs straight, 10pcs 45°, 10pcs 90°
 - 1/4"-28 SAE-LT - 15pcs straight, 10pcs 45°, 10pcs 90°
 - Model: GFT/KIT/SAE-80



Code No.: 231386 **\$39.50**
Reg. Price: \$98.75

Pivot Clamp (Pair)

- Adjustable clamping height
- Brass plate under the clamp arm to protect the workpiece
- Spherical flange nut assures material will be tightly clamped
- Clamping arm is forged



	Table T-Slot Size (in.)	Stud Size (in.)	Code No.	Reg. Price \$	SALE \$
Inch	5/8	1/2 - 13 x 5	326750	133.16	53.26
	3/4	5/8 - 11 x 6	326755	166.24	66.50
Metric	16mm	M12 x 5	326745	241.50	96.60
	20mm	M16 x 6	326746	263.65	105.46
	22mm	M20 x 7	326747	349.56	139.82
	28mm	M24 x 8	326748	541.10	216.44

3-Ply Black Disposable Masks - Box of 50

- Non-medical use
- Elastic loops fit comfortably around ears
- Nose clip molds mask securely to face
- Comfortable & easy to breathe
- Filters dust, pollen, droplets



Code No.: 914953 **\$5.10**
Reg. Price: \$8.50

3pc Outside Micrometer Set

- 0-3" range
- 0.0001" graduation
- Ratchet and lock nut
- Complete with standards (2" and up)
- Carbide faces
- Fitted wood case



Code No.: 200578 **\$74.09**
Reg. Price: \$123.48

STM Magnetic Base

- Standard Model BA-1

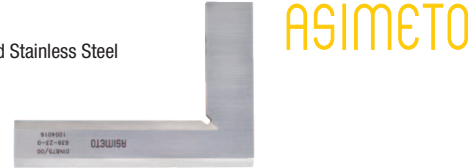


Code No.: 225001
Reg. Price: \$71.50

\$42.90

Bevel Steel Squares

- Made of precision ground hardened Stainless Steel
- Accuracy according to DIN875



Inch Size	Metric Size	Squareness	Code No.	Reg. Price \$	SALE \$
3" x 2"	75 x 50mm	00	7639220	69.57	27.83
4" x 2.75"	100 x 70mm	00	7639230	76.26	30.50
6" x 4"	150 x 100mm	00	7639240	132.85	53.14
8" x 5"	200 x 130mm	00	7639250	170.34	68.14

"B10" Set - SG6000

- For Steel, Aluminum, & Plastic
Contains: Noga Grip 2 Handle & 20pcs B10 blades



Model	Code No.	Reg. Price \$	SALE \$
SG600	165300	35.91	21.55

9pc Combination Wrench Set

- 1/4", 5/16", 3/8", 7/16", 1/2", 9/16", 5/8", 11/16", 3/4"
- Mirror polished
- Drop forged
- Hardened and tempered



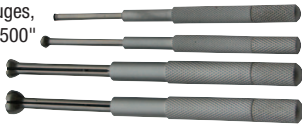
Code No.: 505001 **\$19.68**
Reg. Price: \$49.20

WAREHOUSE OVERSTOCK

All items only while quantities last.

Small Hole Gauge Set

- Set of 4 gauges, 0.125" - 0.500"



Code No.: 200713
Reg. Price: \$23.60



\$11.80

Drive Pin Punches

- Made of tool steel
- Punch section centreless ground
- Handles black oxide for rust prevention
- Knurled body for better grip
- Hardened both ends, Rc 45 to 52
- 4" length



Model No.	Description	Code No.	Reg. Price \$	SALE \$
6300-3/32	3/32" Drive Pin Punch	606254	5.38	2.15
6300-1/8	1/8" Drive Pin Punch	606256	5.38	2.15
6300-5/32	5/32" Drive Pin Punch	606258	5.38	2.15
6300-3/16	3/16" Drive Pin Punch	606260	5.38	2.15
6300-1/4	1/4" Drive Pin Punch	606264	5.38	2.15

Deluxe Tool Setting Stand

Quick and easy way to change cutters and pull studs. Protects the taper of holder with protective insert. Available in all tapers.

- Select between horizontal or vertical tool holding; quick and simple operation
- For Cat BT & NMTB Tapers



Vertical	Horizontal	Code No.	Reg. Price \$	SALE \$
40 Taper	40 Taper x 2 (only BT & NMTB)	335250	895.24	358.10
50 Taper	50 Taper x 2 (only BT & NMTB)	335260	895.24	358.10

Roll Forged HSS Jobber Drills

- An economic HSS drill used for drilling all non-alloy materials.
- 118° point
- Black oxide finish



Size	Code No.	Reg. Price \$	SALE \$
3/64"	119604	1.28	0.51
1/16"	119606	1.34	0.54
5/64"	119608	1.34	0.54
3/32"	119610	1.36	0.54
7/64"	119612	1.36	0.54
1/8"	119614	1.80	0.72
9/64"	119616	1.79	0.72
11/64"	119620	1.78	0.71
3/16"	119622	1.78	0.71
13/64"	119624	1.98	0.79
7/32"	119626	2.02	0.81
15/64"	119628	2.02	0.81
9/32"	119634	2.99	1.20
19/64"	119636	3.42	1.37
5/16"	119638	3.47	1.39
21/64"	119640	4.22	1.69
11/32"	119642	4.22	1.69
23/64"	119644	4.60	1.84
25/64"	119648	4.71	1.88
13/32"	119650	5.30	2.12
7/16"	119654	5.77	2.31
29/64"	119656	5.88	2.35
15/32"	119658	5.88	2.35

Blue Ring HSSE-V3 Spiral Point Taps



- Used in general machine tapping applications for mild carbon steels such as 1018, 1010, 1035, 1045, 1050 and 1065

Designed for high-speed tapping applications. Developed to withstand the high stress and high heat associated with high-speed CNC production or conventional tapping. Features a unique free-cutting design with a special tempering and geometry which contributes to extra tool life.

- 4.5 Pitch lead (Intermediate)
- Up to 25 HRC



While Supplies Last



Inch

Tap	Length (in.)	Thread Length	Code No.	Reg. Price \$	SALE \$
4	1-7/8	0.433	119700	8.82	4.41
6	2	0.512	119701	7.38	3.69
6	2	0.512	119722	8.49	3.40
10	2-3/8	0.512	119704	7.38	3.69
12	2-3/8	0.512	119705	8.49	4.25
1/4	2-1/2	0.630	119707	9.14	4.57
1/4	2-1/2	0.630	119725	9.14	4.57
1/4	2-1/2	0.630	119726	9.14	4.57
5/16	2-23/32	0.748	119708	12.87	5.15
5/16	2-23/32	0.748	119709	12.87	5.15
5/16	2-23/32	0.748	119727	12.87	5.15
5/16	2-23/32	0.748	119728	12.87	5.15
3/8	2-15/16	0.748	119729	12.67	6.34
3/8	2-15/16	0.748	119730	12.67	6.34
7/16	3-5/32	0.866	119712	16.20	8.10
7/16	3-5/32	0.866	119731	16.20	8.10
1/2	3-3/8	0.945	119732	19.29	9.65
5/8	3-13/16	1.102	119714	56.44	22.58
3/4	4-1/4	1.220	119715	88.63	35.45
3/4	4-1/4	1.220	119734	83.12	33.25
7/8	4-11/16	1.339	119716	115.09	46.04
7/8	4-11/16	1.339	119735	156.87	62.75
1	5-1/8	1.496	119717	156.87	62.75
1	5-1/8	1.496	119736	148.39	59.36
1-1/8	5-7/16	1.732	119718	209.79	83.92
1-1/8	5-7/16	1.732	119737	209.79	83.92
1-1/4	5-3/4	1.732	119719	244.18	97.67
1-1/4	5-3/4	1.732	119738	244.18	97.67
1-3/8	6-1/16	2.000	119720	321.13	128.45
1-1/2	6-3/8	2.000	119721	411.86	164.74

Metric

Tap	Length (in.)	Thread Length	Code No.	Reg. Price \$	SALE \$
M2 x 0.4	1-3/4	0.433	119750	15.10	6.04
M2.5 x 0.45	1-13/16	0.512	119751	15.10	6.04
M3 x 0.5	1-15/16	0.433	119752	12.13	4.85
M3.5 x 0.6	2	0.512	119753	12.01	4.80
M4.5 x 0.75	2-3/8	0.512	119755	14.33	5.73
M5 x 0.8	2-3/8	0.512	119756	10.47	4.19
M6 x 1	2-1/2	0.630	119757	10.47	4.19
M7 x 1	2-23/32	0.630	119758	14.77	5.91
M8 x 1	2-23/32	0.748	119759	14.77	5.91
M8 x 1.25	2-23/32	0.748	119760	12.13	4.85
M12 x 1.25	3-3/8	0.945	119763	24.80	9.92
M12 x 1.75	3-3/8	0.945	119764	24.37	9.75
M14 x 1.5	3-19/32	0.984	119765	45.53	18.21
M16 x 2	3-13/16	1.102	119768	45.86	18.34
M20 x 2.5	4-15/32	1.220	119772	96.79	38.72
M22 x 1.5	4-11/16	1.339	119773	110.46	44.18
M22 x 2.5	4-11/16	1.339	119774	110.46	44.18
M24 x 1.5	4-29/32	1.339	119775	148.39	59.36
M27 x 1.5	5-1/8	1.181	119777	209.79	83.92
M30 x 3.5	5-7/16	1.378	119780	244.18	97.67

Order before 3:00pm EST and we'll ship same day

WISE



6" Versatile Vise

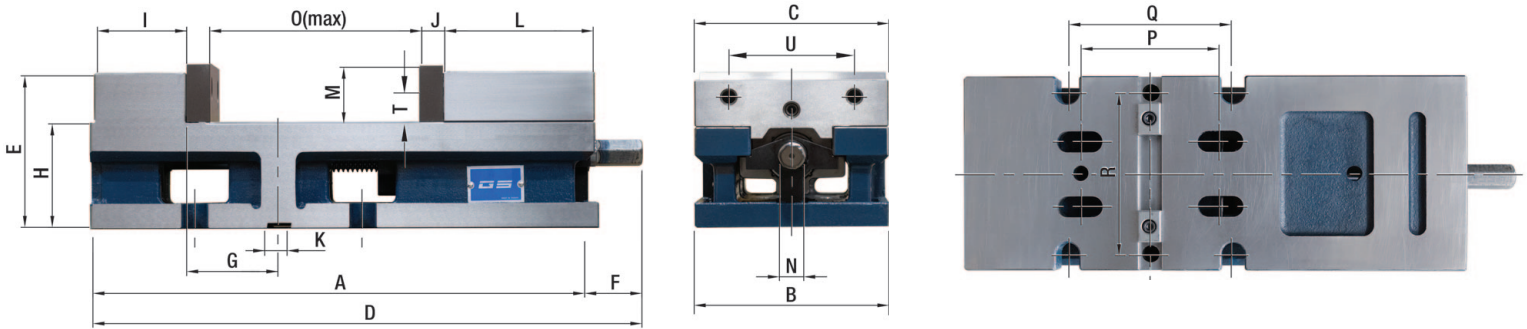
Compare the GSV60 with the leading competitor...
the biggest difference you'll find is price!

- 6" vise with 6-1/2" opening
- High accuracy vise for single station CNC centres specially designed to prevent workpiece lift
- 2 operating positions for Vertical Machine Centres: Upright & Lay Down
- 1 operating position for Horizontal Machine Centres: Horizontal
- Bed height: 81mm ± 0.012 mm (3.189" ± 0.0005 ")
- Material: FCD-60
- Weight: 31kg



Code No.: 382620 **\$805.62**
Reg. Price: \$1,150.88

LIFETIME WARRANTY!



GSV60 6" Versatile Vise Dimensions:

A	B	C	D	E	F	G	H	I	J	K	L	M	N	O	P	Q	R	T	U	Wt.
385	152.45	151	431.8	118.7	46.8	69.84	81	69.9	18	18	114.3	44.5	19	163	107.95	127	127	23.8	98.4	31kg

Leading Competitor Comparison

385	152.45	151	431.8	118.67	46.8	69.84	80.95	69.85	18	18	114.3	44.5	19	163	107.95	127	127	23.8	98.4	31kg
-----	--------	-----	-------	--------	------	-------	-------	-------	----	----	-------	------	----	-----	--------	-----	-----	------	------	------

Distributed by:



**Outillage
Industriel
Québec Itée**

Tel.: 418 683.2527
800 463.5089

395, avenue Marconi
Québec QC G1N 4A5

oig@quebecindustriel.com
www.quebecindustriel.com



Scan to
download the flyer

Pricing valid from January 1 to April 30, 2022 or while quantities last.

We reserve the right to make changes without notice and accept no liabilities for mistakes and printing errors. All taxes extra.



Sowa Tool & Machine Co. Ltd.
500 Manitow Drive
Kitchener, Ontario
N2C 1L3

Western Canada Branch
9649-49th Ave
Edmonton, AB
T6E 5Z5

Toll Free: 1-800-265-8221
Phone: (519) 748-5750
Fax: (519) 748-9304
sales@sowatool.com
www.sowatool.com



Printed in Canada